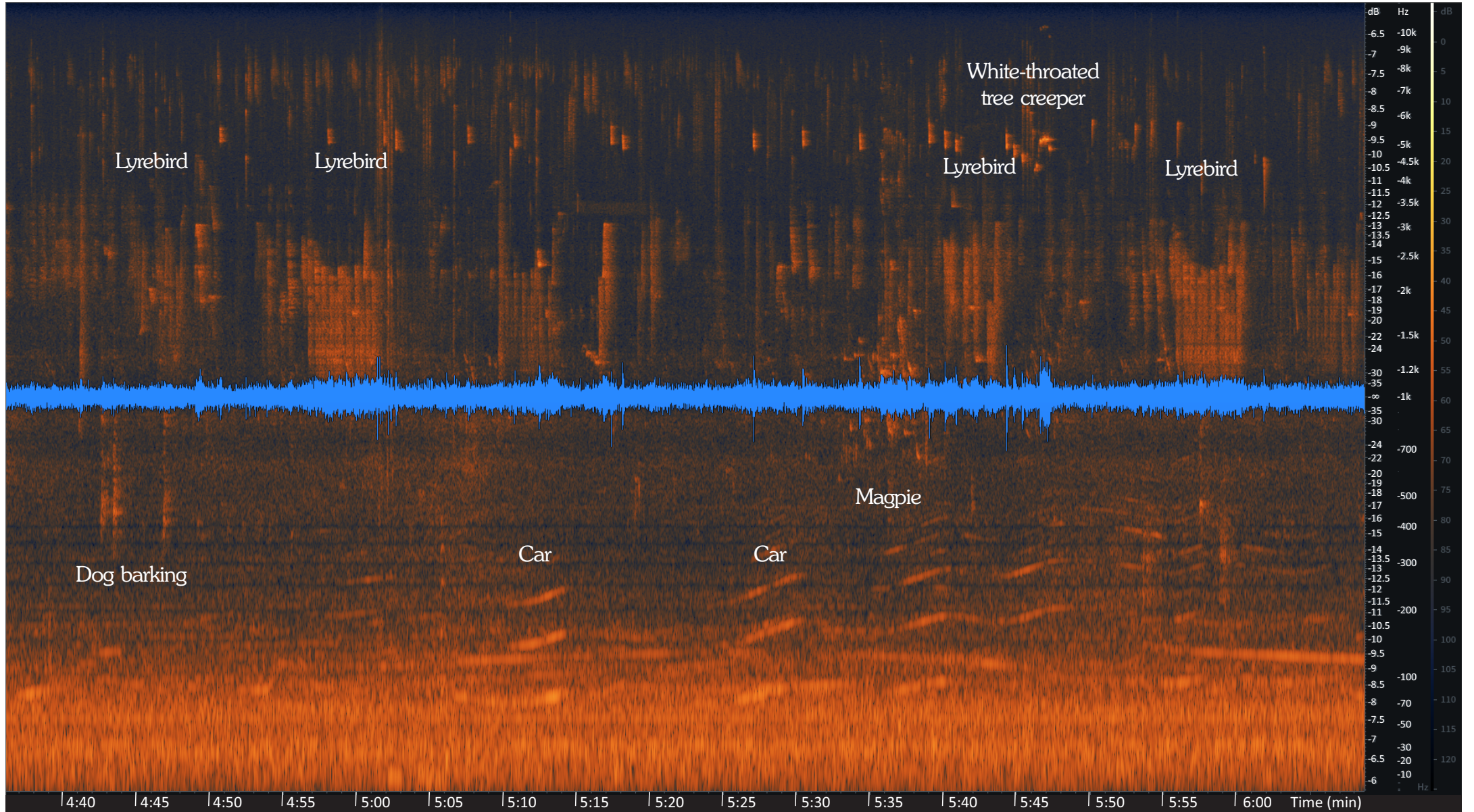


Panel 1 (0:32 to 2:03 on sound recording). Blue tracing is the amplitude of all sounds (loudness) in decibels (dB). Orange section represents the frequencies of the various sounds in hertz (Hz).



Panel 2 (4:37 to 6:04 on sound recording). Blue tracing is the amplitude of all sounds (loudness) in decibels (dB). Orange section represents the frequencies of the various sounds in hertz (Hz).